

# Predictive Maintenance

We will do the job for you!



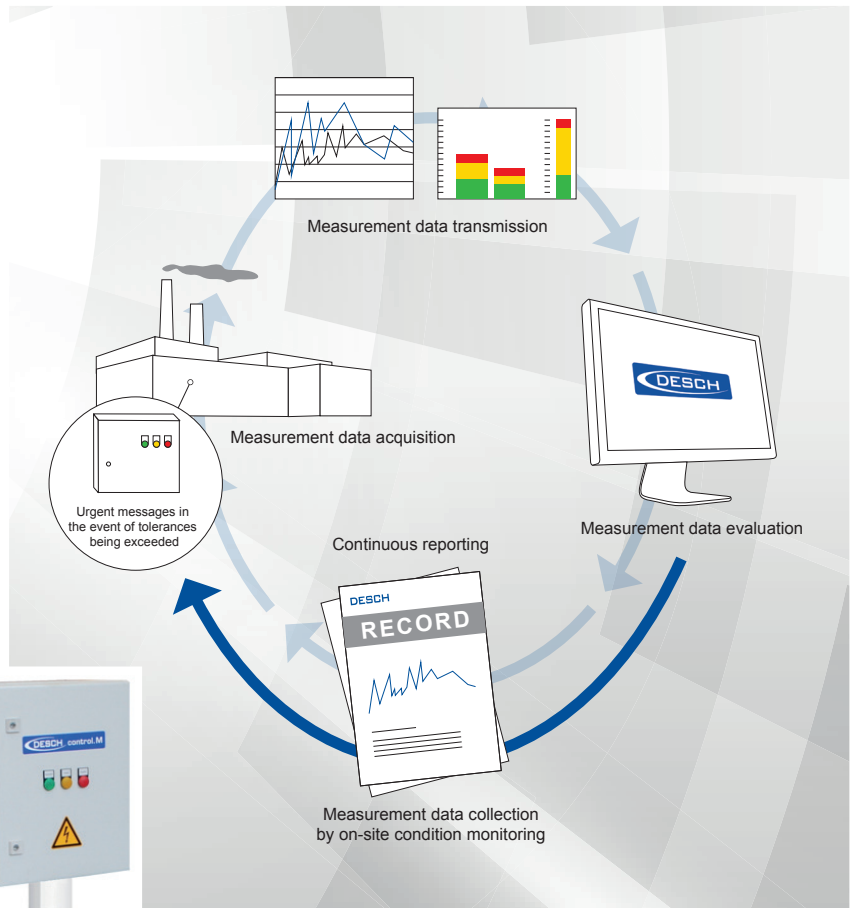
Service & Customer Support

# Predictive Maintenance

## DESCH Control.M

The condition-based monitoring of machinery and equipment as part of industry 4.0 became an integral part of predictive maintenance.

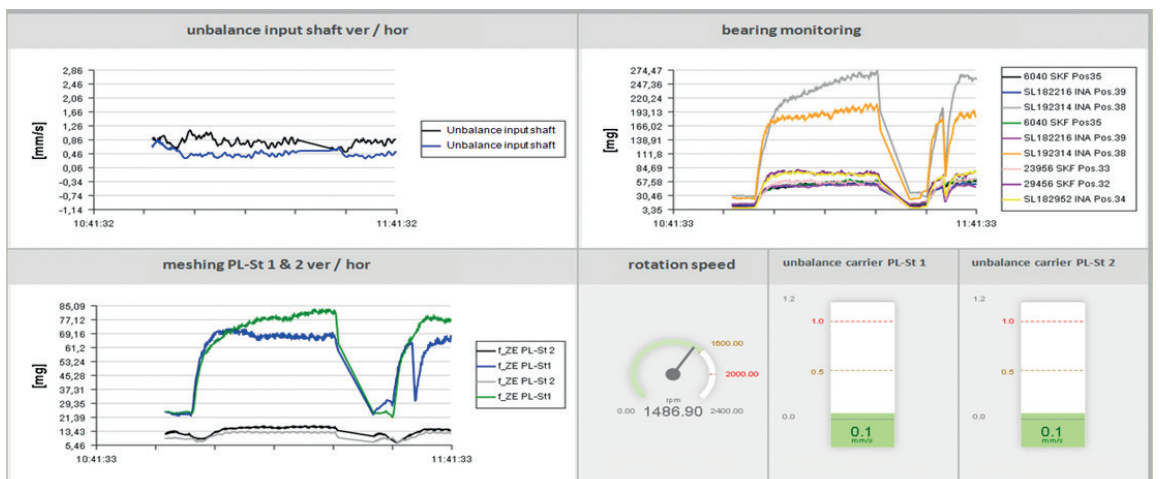
With Control.M DESCH used its extensive know-how in vibration diagnostics to offer a compact and user-friendly tool. With its continuous data monitoring, the system detects defaults at a very early stage to allow for timely organization of needed maintenance.



### Reporting

In regular intervals you receive a report on the present condition and development of the monitored unit.

### Visualization



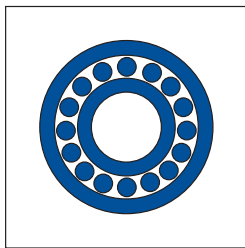
## Predictive Maintenance

## Machine Diagnosis

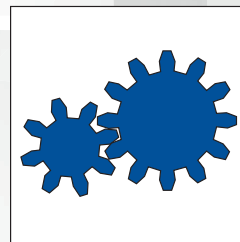
If changes in the monitored data requires speedy evaluation, DESCH offers an on-site inspection as part of our service support.

Together with you, we will determine the repeat intervals and build-up a machine history based on the actual condition measured.

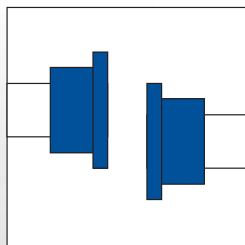
### Detectable defects



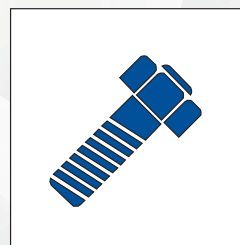
Damaged bearing



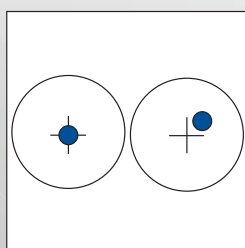
Tooth engagement



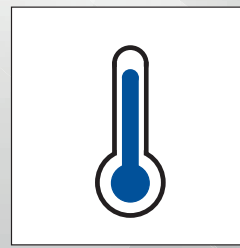
Miss-alignment



Loose connection



Unbalanced



Temperature

# Contact

---

Nidec DESCH Antriebstechnik GmbH & Co. KG  
Postfach / Postbox 1440  
59753 Arnsberg/Germany  
Kleinbahnstraße 21  
59759 Arnsberg/Germany  
T +49 2932 300 200  
info@desch.com  
[www.desch.com](http://www.desch.com)

