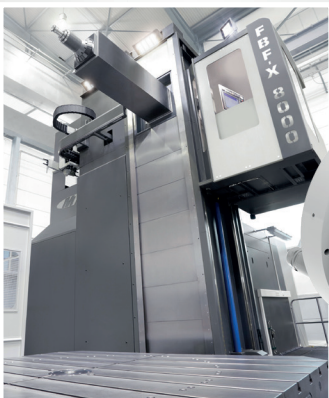
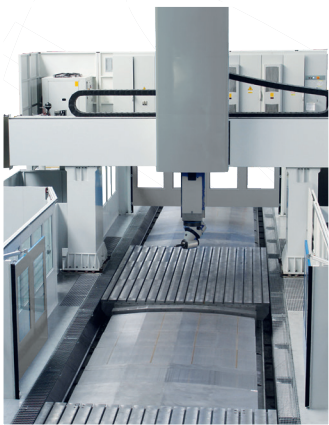


DESCH Denox[®] Base / Flex - Line

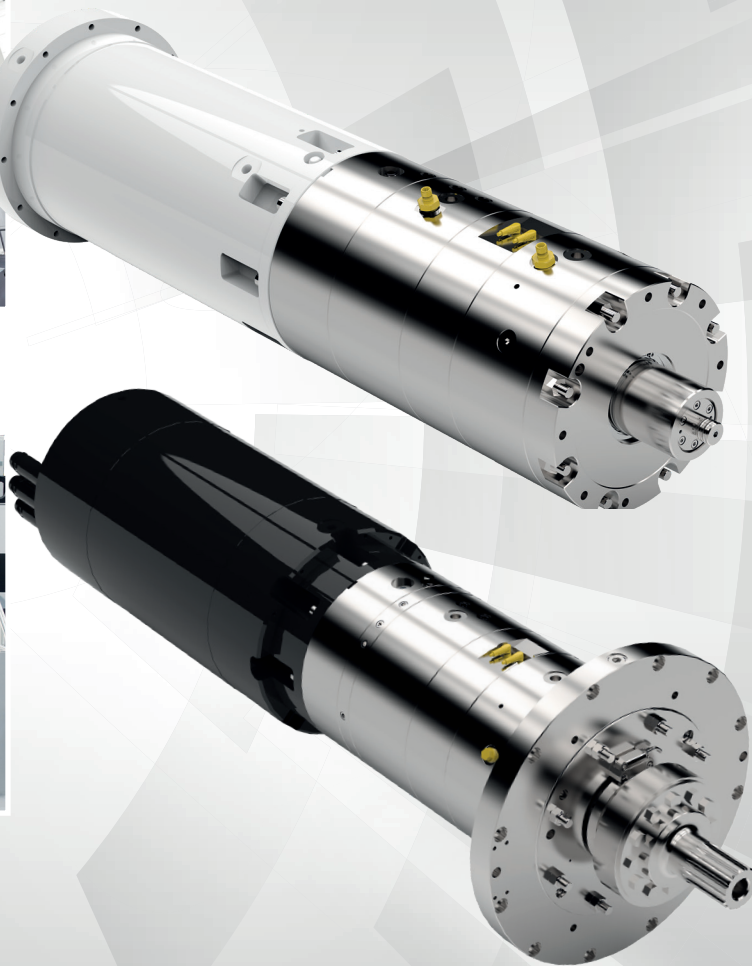
Inline main spindle drives for machine tools



Denox[®] BASE-Line



Denox[®] FLEX-Line



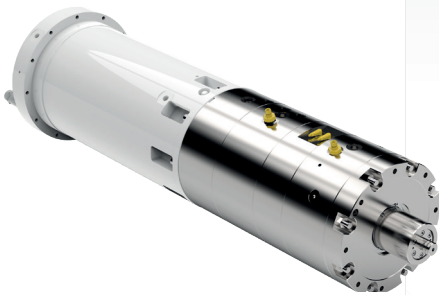
DESCH Denox® Base / Flex - Line

Inline main spindle drives for machine tools

The DESCH motor gearbox series Denox®, which is already widely used as main spindle drives in many machine tools, receives a new modular extension. In order to meet the demand for optimum availability with maximum flexibility at the same time, two new design lines DESCH Denox® BASE-Line and DESCH Denox® FLEX-Line have been developed.

The new DESCH Denox® BASE-Line stands for a standardized motor gearbox unit in a pre-configured design, which stands out especially high availability at the same time as the standard price level and of course still guarantees the high DESCH quality promise.

Denox® BASE-Line



General features

- Stocked components
- Set up for vertical and horizontal installation position
- Fixed installation dimensions (D)
- Cutting fluid tube integrated
- Media supply via motor - B side (e.g. lubricating and shifting oil)

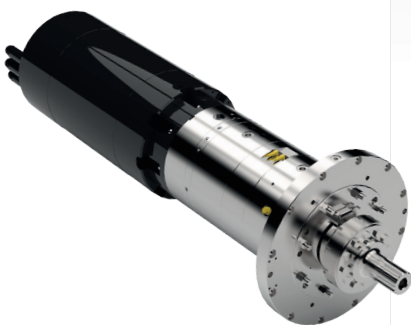
Motor

- Defined motor variants
- Defined mounting flange and centering

Planetary shifting gearbox

- Shaft diameter range pre-selected
- Defined output flange with arbitrary inner centerings
- Gear ratio $i = 1/5$
- Integrated temperature sensor and shifting monitoring

Denox® FLEX-Line



General features

- Individually configurable
- Specific adaptation to the installation situation
- Variable media supply (axial and/or radial)

Motor

- Motor design and execution on request
- Optional features:**
- Integrated tool release system (drawbar)
 - Rotary union in different performance executions

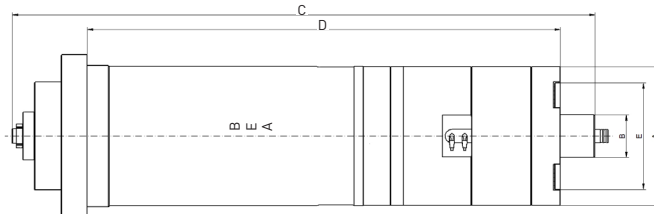
Planetary shifting gearbox

- Different flange designs can be realized
- Variable design of output drive shaft
- Housing can be changed (e.g. foot design)
- Other gear ratios on request

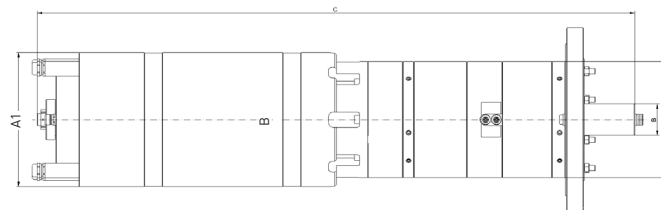
Optionale Features:

- Temperature and vibration sensors
- Torque measuring system DESCHtorque
- Gearbox housing cooling

The DESCH Denox® FLEX-Line represents the entire customized concept that has always been lived at DESCH. Especially as a customer-specific inline drive solution for direct RAM installation, the DESCH Denox® FLEX-Line series offers many technical options to choose from, as well as a high flexibility for special design requirements.



Rated data			HSE40-B	HSE60-B	HSE80-B
Power	P	kW	40	65	88
Rated speed	n	rpm	1520	1535	1270
Max. output speed	n max.	rpm	7000	6000	4500
Rated torque	T1	Nm	250	405	665
Ratio	i		1 / 5	1 / 5	1 / 5
Nominal torque (S1-100%)	T2	Nm	1250	2025	3325
Outer centering	A	mm	240	260	300
Shaft diameter	B	mm	60 - 80	70 - 90	80 - 100
Total unit length	C	mm	1110	1110	1160
Installation dimension	D	mm	940	890	1060
Inner centering	E	mm	160 - 170	180 - 200	190 - 230
Motor variant			asynchronous	synchronous	synchronous



Rated Data			HSE40-F	HSE60-F	HSE80-F	HSE100-F
Power	P	kW	40 - 50	60 - 70	80 - 90	100 - 120
Rated speed	n	rpm	Depending on motor configuration			
Max. output speed	n max.	rpm	8000	7000	4500	4500
Rated torque	T1	Nm	250 - 300	400 - 600	600 - 800	800 - 1000
Ratio	i		1 / 5	1 / 5	1 / 5	1 / 5
Nominal torque (S1-100%)	T2	Nm	1200 - 1500	2000 - 3000	3300 - 4200	4000 - 5200
External diameter Motor	A1	mm	240 - 250	260 - 300	300	350
External diameter gearbox	A2	mm	240	260	300	350
Shaft diameter	B		60 - 80	70 - 90	80 - 100	80 - 120
Total unit length	C	mm	Depending on configuration			
Motor variant			asynchronous / synchronous			

Contact

Nidec DESCH Antriebstechnik GmbH & Co. KG
Postfach / Postbox 1440
59753 Arnsberg/Germany
Kleinbahnstraße 21
59759 Arnsberg/Germany
T +49 2932 300 0
px@desch.com
www.desch.com

