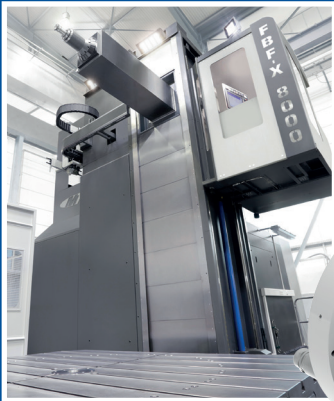


## DESCH Denox® BASE / FLEX - LINE

Inline main spindle drives for machine tools

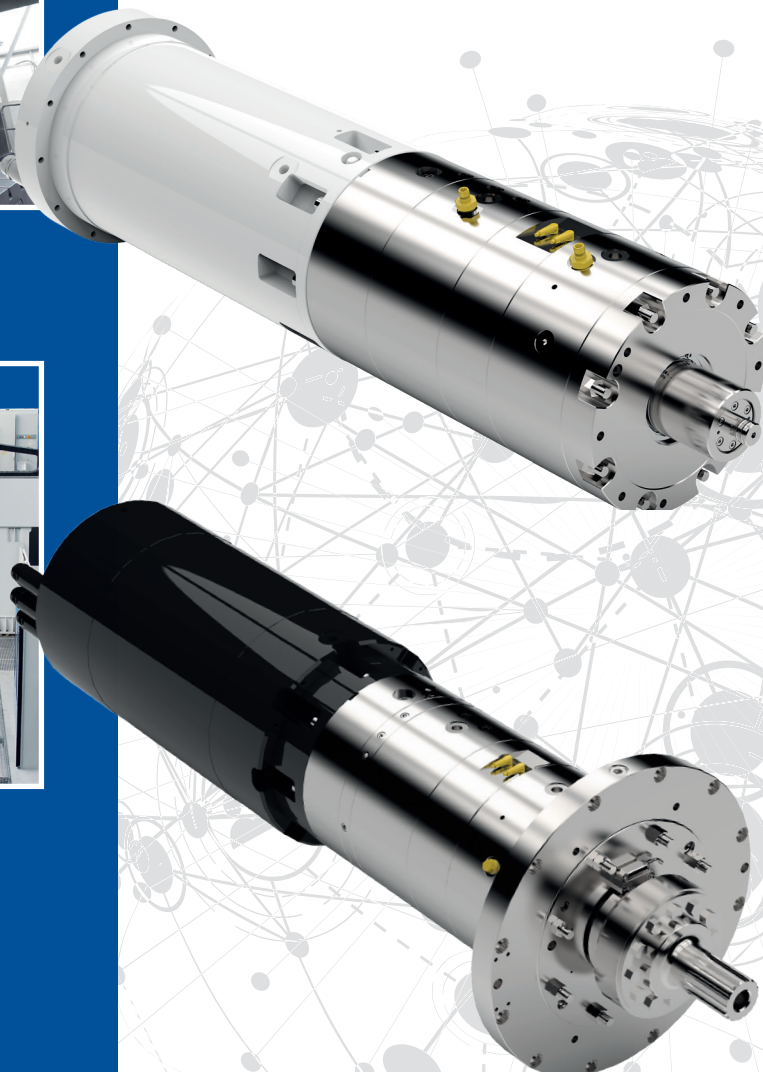


Denox®  
BASE-Line



Denox®  
FLEX-Line

**NEW**



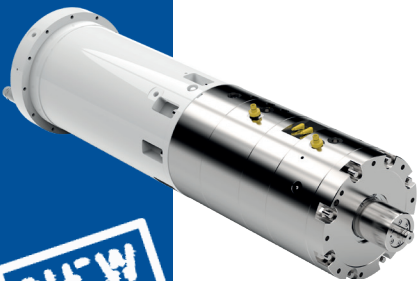
# DESCH DENOX® BASE / FLEX - LINE

## Inline main spindle drives for machine tools

The DESCH motor gearbox series Denox®, which is already widely used as main spindle drives in many machine tools, receives a new modular extension. In order to meet the demand for optimum availability with maximum flexibility at the same time, two new design lines DESCH Denox® BASE-Line and DESCH Denox® FLEX-Line have been developed.

The new DESCH Denox® BASE-Line stands for a standardized motor gearbox unit in a pre-configured design, which stands out especially high availability at the same time as the standard price level and of course still guarantees the high DESCH quality promise.

### Denox® BASE-Line



#### General features

- Stocked components
- Set up for vertical and horizontal installation position
- Fixed installation dimensions (D)
- Cutting fluid tube integrated
- Media supply via motor - B side (e.g. lubricating and shifting oil)

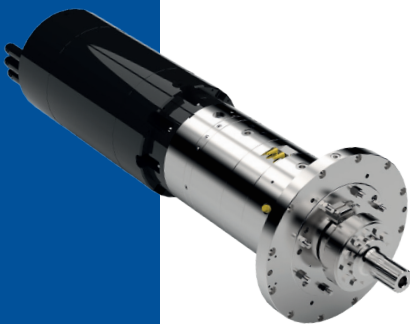
#### Motor

- Defined motor variants
- Defined mounting flange and centering

#### Planetary shifting gearbox

- Shaft diameter range pre-selected
- Defined output flange with arbitrary inner centerings
- Gear ratio  $i = 1/5$
- Integrated temperature sensor and shifting monitoring

### Denox® FLEX-Line



#### General features

- Individually configurable
- Specific adaptation to the installation situation
- Variable media supply (axial and/or radial)

#### Motor

- Motor design and execution on request
- **Optional features:**
- Integrated tool release system (drawbar)
- Rotary union in different performance executions

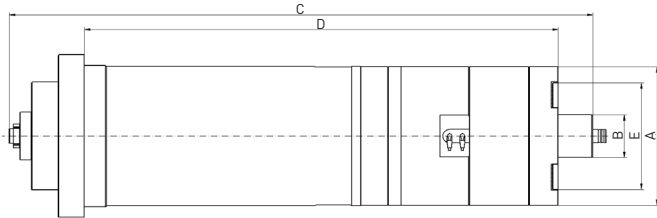
#### Planetary shifting gearbox

- Different flange designs can be realized
- Variable design of output drive shaft
- Housing can be changed (e.g. foot design)
- Other gear ratios on request

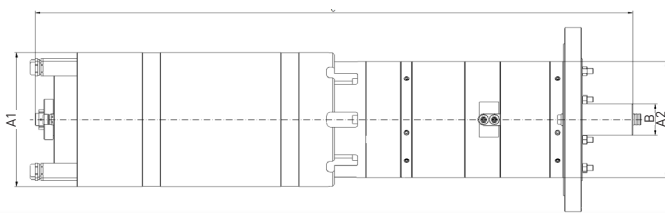
#### Optionale Features:

- Temperature and vibration sensors
- Torque measuring system DESCHtorque
- Gearbox housing cooling

The DESCH Denox® FLEX-Line represents the entire customized concept that has always been lived at DESCH. Especially as a customer-specific inline drive solution for direct RAM installation, the DESCH Denox® FLEX-Line series offers many technical options to choose from, as well as a high flexibility for special design requirements.



Rated data			HSE40-B	HSE60-B	HSE80-B
Power	P	kW	40	65	88
Rated speed	n	rpm	1520	1535	1270
Max. output speed	n max.	rpm	7000	6000	4500
Rated torque	T1	Nm	250	405	665
Ratio	i		1 / 5	1 / 5	1 / 5
Nominal torque [S1-100%]	T2	Nm	1250	2025	3325
Outer centering	A	mm	240	260	300
Shaft diameter	B	mm	60 - 80	70 - 90	80 - 100
Total unit length	C	mm	1110	1110	1160
Installation dimension	D	mm	940	890	1060
Inner centering	E	mm	160 - 170	180 - 200	190 - 230
Motor variant			asynchronous	synchronous	synchronous



Rated Data			HSE40-F	HSE60-F	HSE80-F	HSE100-F
Power	P	kW	40 - 50	60 - 70	80 - 90	100 - 120
Rated speed	n	rpm	Depending on motor configuration			
Max. output speed	n max.	rpm	8000	7000	4500	4500
Rated torque	T1	Nm	250 - 300	400 - 600	600 - 800	800 - 1000
Ratio	i		1 / 5	1 / 5	1 / 5	1 / 5
Nominal torque [S1-100%]	T2	Nm	1200 - 1500	2000 - 3000	3300 - 4200	4000 - 5200
External diameter Motor	A1	mm	240 - 250	260 - 300	300	350
External diameter gearbox	A2	mm	240	260	300	350
Shaft diameter	B		60 - 80	70 - 90	80 - 100	80 - 120
Total unit length	C	mm	Depending on configuration			
Motor variant			asynchronous / synchronous			

## CONTACT

Nidec DESCH Antriebstechnik GmbH & Co. KG  
 Postbox 1440  
 59753 Arnsberg/Germany  
 Kleinbahnstraße 21  
 59759 Arnsberg/Germany  
 T +49 2932 300 376  
 machinetooldrives@desch.com  
[www.desch.com](http://www.desch.com)



scan for contact



DESCH China  
 Machinery (Pinghu) Co., Ltd.  
 No. 1680 Xingping 1 Road, Build. 3  
 Pinghu Economic Technological  
 Development Zone  
 314200 Zhejiang P. R. China  
 T +86 573 8557 8988  
 F +86 573 8557 8989  
[desch.china@desch.com](mailto:desch.china@desch.com)

DESCH Italia  
 DESCH Drive Technology  
 Official Representative  
 in Italy  
 Via G. Garibaldi, 3  
 20053 Rodano / Milano  
 Italy  
 T +39 02 477 58 426  
[desch.italia@desch.com](mailto:desch.italia@desch.com)

DESCH UK  
 DESCH Antriebstechnik  
 GmbH & Co. KG  
 Unit 2  
 38 Jubilee Road  
 Newtownards BT23 4YH  
 Northern Ireland  
 T +44 2890 020 996  
[uk.sales@desch.com](mailto:uk.sales@desch.com)

DESCH Canada Ltd.  
 240 Shearson Crescent  
 Cambridge  
 Ontario  
 Canada N 1T 1J6  
 T +1800 2631866  
 +1519 6214560  
 F +1519 6231169  
[desch.canada@desch.com](mailto:desch.canada@desch.com)

DESCH USA LP  
 Sales, Engineering,  
 Service Support  
 3700 Embassy  
 Parkway, Suite 530  
 Akron Ohio 44333  
 T +1 330 937 9030  
 F +1 330 937 9031  
[sales.usa@desch.com](mailto:sales.usa@desch.com)

DESCH USA LP  
 Manufacturing,  
 Assembly  
 4940 Merrifield Rd  
 Dallas  
 Texas 75236  
[desch.dallas@desch.com](mailto:desch.dallas@desch.com)